



ROSS F. GOLDBERG, MD
PRESIDENT

LIBBY MCDANNELL, CAE
CHIEF EXECUTIVE OFFICER

I don't need to tell you: these are not normal times.

The COVID-19 emergency has placed tremendous pressures on Arizona physicians. From those on the front lines treating infected patients to practitioners adapting to the challenges of delivering patient care in new and innovative ways, our physicians have risen to the challenge.

In this pandemic, ArMA has also stepped up to serve its members. In the last few weeks alone, ArMA has taken a leadership role on:

- ***Executive Orders involving telemedicine access and liability protection***
- ***Advocating for and providing detailed information on financial relief***
- ***Working directly with health insurers to improve physician payments, and***
- ***Securing critically needed PPE for medical practices***

Attached is additional information ArMA has accomplished

These are but a few of the services ArMA has recently provided. And if there is one thing this emergency has taught all of us, it's this: ***Arizona physicians have so much more in common than we do differences.*** I believe now is the time not to weaken our collective resolve, but to fortify it. That's why as one of my first acts as ArMA President, I am leading a membership drive. ***Because more than ever, we must stand together.*** Considering the challenges, we all face, I know joining ArMA might not be the first thing on your mind. But in these challenging times there is also a tremendous opportunity -- to unite, stronger than ever, and advance interests we all share.

ArMA Membership for 2020 is now 1/2 price. Won't you please join ArMA and help us during this most critical time for all Arizona physicians? Please complete the attached membership application below or join online: www.AZmed.org. If you have questions, need help joining, or would like to learn more about member benefits, contact our membership team: Simone (602)347-6907 simone@azmed.org or Socci (602)347-6914 spetty@azmed.org.

COVID-19 has forced upon us many new realities. ***I believe a renewed importance in joining ArMA and protecting the House of Medicine must be one of them.*** Thank you for your consideration, and my most sincere thanks for all that you do.

Sincerely,

Ross F. Goldberg, MD, FACS
President, Arizona Medical Association

info@AZmed.org
AZmed.org

@AZmedicine
 @ArizonaMedicine
 @ArizonaMedicine

2401 W. PEORIA AVE. SUITE 130 PHOENIX, AZ 85029

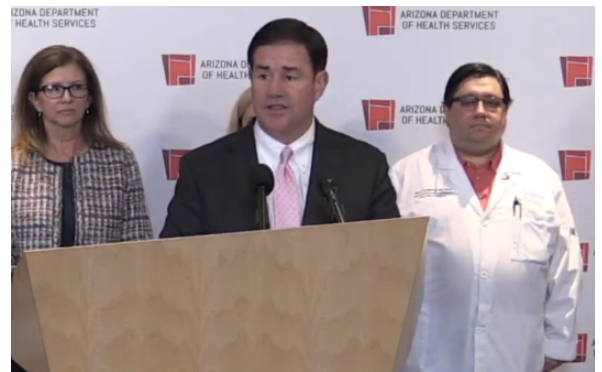
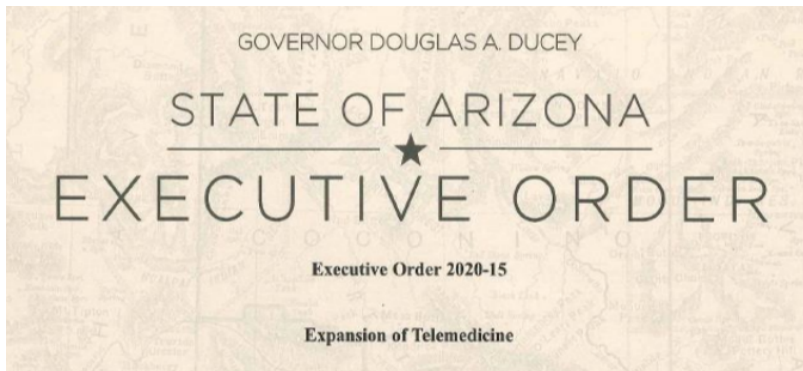
602.347.6900

ArMA in Action



ArMA
ARIZONA MEDICAL
ASSOCIATION
Physician led. Patient focused.

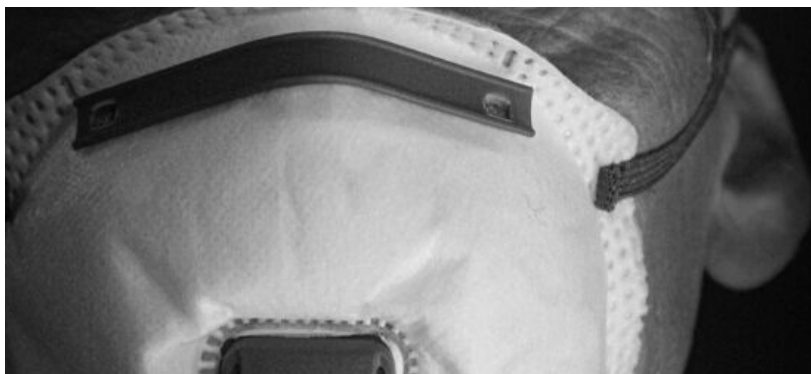
The Arizona Medical Association has been hard at work fighting for Arizona physicians during the COVID-19 public health emergency.



ArMA remains in constant contact with the most important health care decisionmakers in the state, from the Governor's office to the Arizona Department of Health Services. ArMA played a central role in the Governor's Executive Orders on elective surgeries, malpractice liability reform, telemedicine and more.



ArMA convenes weekly virtual town halls in order to answer questions from physicians across Arizona about the issues that impact them the most. Jessica Rigler, MPH, ADHS Assistant Director for Public Health Preparedness Services, and Lisa Villarroel, M.D., MPH, ADHS Division of Preparedness Medical Director, joined ArMA's April 29 town hall.



ORDER PPE NOW

ArMA and MCMS are partnering to give you access to the PPE you need at reasonable prices



ArMA partnered with the Maricopa County Medical Society to successfully create an affordable venue for physicians to purchase quality PPE.



ArMA requested for \$240 million of Coronavirus Aid, Relief, and Economic Security (CARES) Act money to be distributed as stipends and grants directly to Arizona physicians.

ArMA worked with AHCCCS to request a CMS waiver for physician stipends after successfully lobbying state legislators for an increase in provider reimbursement rates earlier in the year.

SB1324 BROPHY MCGEE				Ayes	29
opioid prescriptions; naloxone requirement; exceptions				Nays	0
				Not Voting	0
				Excused	1
				Vacant	0
SYSTEM OPEN					
ALLEN S	Y	FARNSWORTH D. (16)	Y	NAVARRETE	Y
ALSTON	Y	FARNSWORTH E. (12)	Y	OTONDO	Y
BORRELLI	Y	GONZALES	Y	PACE	E
BOWIE	Y	GOWAN	Y	PESHLAKAI	Y
BOYER	Y	KERR	Y	PRATT	Y
BRADLEY	Y	KERR	Y	QUEZADA	Y
BROPHY MCGEE	Y	LEACH	Y	RIOS	Y
CARTER	Y	LIVINGSTON	Y	STEELE	Y
CONTRERAS	Y	MENDEZ	Y	UGENTI-RITA	Y
DALESSANDRO	Y	MESNARD	Y	PRESIDENT FANN	Y
THIRD READING 1					

THE ARIZONA SURGELINE



ArMA teamed up with the Arizona Department of Health Services to staff The Arizona Surge Line, a 24/7 toll-free service that hospitals can call to transfer COVID-19 patients to facilities with a more appropriate level of care.

ArMA is partnering with CGM to provide Arizona physicians with a free platform to practice

Telemedicine

Click here to learn more

ArMA partnered with CompuGroup Medical to provide CGM ELVI, their telemedicine platform, for free to physicians throughout Arizona in accordance with physical distancing guidelines.

#StayHomeAZ

Stay home for the doctors.
Stay home for the nurses.
Stay home for your family.
Stay home for Arizona.

ArMA launched the #StayHomeAZ social media campaign to promote physical distancing in an effort to help mitigate the spread of COVID-19 in Arizona. Associations and state legislators have since participated.

ArMA debuted a COVID-19 resources page, with everything physicians & patients need to know regarding the virus in Arizona.



COMBATING CORONAVIRUS



RESOURCES FOR PHYSICIANS & PATIENTS



ARIZONA MEDICAL
ASSOCIATION

Physician led. Patient focused.

Half-Year Membership Application

May 1 to December 31, 2020

★ Required

★ Name, Title		ArMA ID #	
★ Professional Address <input type="checkbox"/> Select as primary mailing address		★ Phone	
★ Email Address (kept confidential)	★ AZ Med Lic#	★ Date Issued	★ Specialty
★ Personal Address	★ Phone	★ Cell # (kept confidential)	

★ Email needed to receive weekly e-newsletter *Medicine This Week* (MTW)

DISCLOSURE: Your ArMA half-year membership runs from May 1, 2020 – December 31, 2020. Dues to the Arizona Medical Association are not deductible as a charitable contribution but may be partially deductible as a business expense. The deductible portion of your Arizona Medical Association 2020 Dues is 68%. Only 32% of your ArMA 2020 Dues is not deductible as it is related to lobbying activities.

Please return entire form

Save Time. Save a Stamp. Pay Online: www.azmed.org
Click on **Membership / Join Now**

Mail to: 2401 W. Peoria Ave, Ste 130, Phoenix, AZ 85029

Or fax: **602-246-1161**

- ☐ Check payable to: **Arizona Medical Association**
- ☐ Discover, Visa, MasterCard, American Express

Card # _____ / _____ / _____ / _____

CVV Code _____ Expiration Date _____ / _____

Print Name on Card _____

Credit Card Billing Address _____

City, State, Zip _____

Signature: _____

Half-Year Dues Information

<input type="checkbox"/>	Active MD/DO	\$475.00	\$240.00
<input type="checkbox"/>	Associate Part Time	\$240.00	\$120.00
<input type="checkbox"/>	Out of State	\$240.00	\$120.00
<input type="checkbox"/>	Service (USPHS; VA; Active Duty)	\$105.00	\$ 55.00
<input type="checkbox"/>	Affiliate (P.A., P.A.-C)	\$105.00	\$ 55.00
<input type="checkbox"/>	Active over age 70	\$ 55.00	\$ 30.00
<input type="checkbox"/>	Retired	\$ 55.00	\$ 30.00
<input type="checkbox"/>	Resident/Fellow (after 1 st yr.)	\$ 55.00	\$ 30.00

Please Check the Appropriate Box
Are you ☐ Private Practice or ☐ Employed Physician?

Upon payment of annual dues, I agree to conduct myself professionally and personally according to the principles of medical ethics and to be governed by the Articles of Incorporation and bylaws of the Arizona Medical Association.

Simone Lustig, Associate VP of Membership and Development: 602-347-6907 or simone@azmed.org
Socorro "Socci" Petty, Membership Coordinator: 602-347-6914 or spetty@azmed.org